

COMMUNITY ACTION PARTNERSHIP OF LAKE COUNTY

PROGRAM DETAILS

ENERGY ASSISTANCE PROGRAM – LIHEAP

LIHEAP is designed to assist low-income households pay for part of their winter home heating bills. Other types of assistance include reconnection assistance, furnace repair or replacement and the Percentage of Income Payment Plan. (PIPP)



HEAD START EARLY

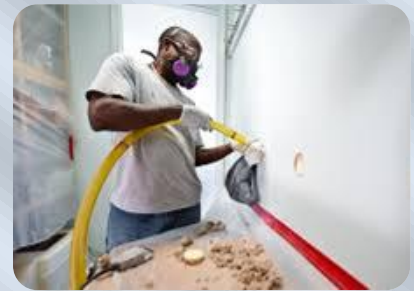
EARLY CHILDHOOD DEVELOPMENT PROGRAM



Our Head Start program provides education, nutrition, health and disability services for children. This program serves low-income Lake County children ages 3-5. The Head Start education program is designed to address each child's strengths and needs, giving each child a strong cognitive foundation prior to entering kindergarten. Children who attend Head Start are also pre-screened for learning disabilities so they can receive the treatment they need. In addition, a key element of the program is the philosophy that parents are the primary influence in the development of each young child, and a system of parent involvement is supported and enhanced by the Head Start program.

HOME WEATHERIZATION

Weatherization is a program designed to aid families by reducing home energy costs. Weatherization work is done on the homes of qualified, low-income families. The improvements are engineered to increase efficiency, thereby reducing the energy needed to heat and cool homes.



RETIRED SENIOR VOLUNTEER PROGRAM (RSVP)



Volunteers receive pre-service orientation and training from RSVP and the organization they will serve. RSVP volunteers chose how, where and how often they want to serve with commitments ranging from a few hours to 40 hours per week. Participating non-profit volunteer locations include community and faith-based organizations, public agencies, healthcare centers, public schools, early childhood centers and food pantries.

YOUTH AND FAMILY SERVICES

Youth and Family Services provides emergency assistance for families in crisis needing immediate aid, Self-Sufficiency Case Management, Prevention Services, and/or scholarships to post-secondary accredited Illinois colleges.

