



2023

IMPACT STATEMENT

COMMUNITY ACTION PARTNERSHIP OF LAKE COUNTY



HELPING PEOPLE, CHANGING LIVES

COMMUNITY ACTION PARTNERSHIP OF LAKE COUNTY

2424 Washington Street, Waukegan, IL 60085

847/249-4330



TABLE of CONTENTS

I. OUR HISTORY.....	p. 3
II. MESSAGE FROM THE EXECUTIVE DIRECTOR/CEO.....	p. 4
III. CLIENT ASSISTANCE BY STATE LEGISLATIVE DISTRICT.....	P. 5
IV. YOUTH AND FAMILY SERVICES, LIHEAP, CLIENT DEMOGRAPHICS.....	p. 6
V. FOOD SECURITY	p. 7
VI. HOUSING ASSISTANCE & SERVICES.....	p. 8
VII. CORPORATE VOLUNTEERS.....	p. 9
VIII. COMMUNITY ENGAGEMENT.....	p.10
IX. SHERMAN COMMUNITY RESOURCE CENTER.....	p.11
X. SOCIAL ENTERPRISES.....	p.12
XI. IL SOLAR FOR ALL.....	p.13



OUR HISTORY

Community Action Partnership of Lake County is one of 1,000 agencies across the United States established under the Economic Opportunity Act of 1964 to fight America's War on poverty.

Community Action Partnership of Lake County has addressed community needs through traditional safety-net services, innovative programming and strategic partnerships.

During our first fifty-seven years, traditional services included: Low Income Home Energy Assistance Program (LIHEAP), Head Start Early Childhood Development Program, Youth and Family Emergency Assistance with a food pantry, Kids Club summer camp, Adventure Kids Childcare, Home Weatherization, Retired and Senior Volunteer Program and Affordable Housing programs for low-income residents and Veterans.

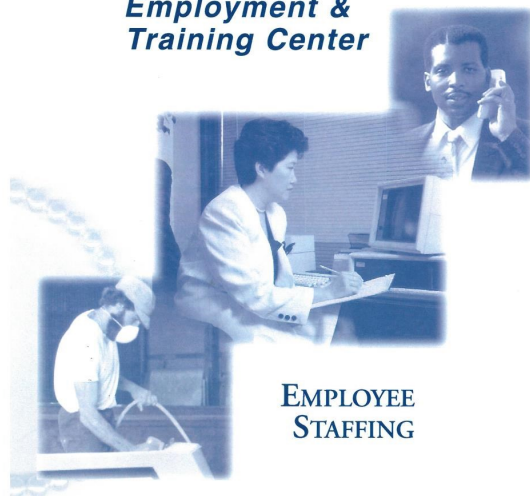
During the nineties, Community Action Partnership of Lake County purchased 116 single and multi-family housing units to rent as affordable housing. Many single family homes bought by the agency were sold to low-income individuals and families as they became self-sufficient and more importantly, were ready to build assets for the future.

In 2005, Community Action Partnership of Lake County established and operated its first social enterprise, CAP Catering Services. CAP Catering Banquets & Dining on Genesee is now located in downtown Waukegan. Community Action Partnership of Lake County social enterprises have grown to three businesses that generate revenue to help fulfill our mission.

In 2013, Community Action Partnership of Lake County established Community Action Foundation of Northern Illinois to fundraise and secure private grant funding to ensure financial growth for the agency. Later that year, the Agency opened "Changing Lives" Upscale Resale Shop in Zion. Today "Changing Lives" Upscale Resale Shop operates as an-online business with Pop-Up live sales events throughout the County.

As new challenges arise in our communities, CAPOLC responds. Currently, the agency is transitioning 3-bedroom townhouses at Hervey Village in North Chicago, IL into permanent housing for homeless and near homeless US Veterans with children. We have replaced Retired and Senior Volunteer Program with a broader volunteer program, and opened a community resource center in North Chicago, IL.

COMMUNITY ACTION Employment & Training Center



EMPLOYEE STAFFING



Mary Lockhart White
Executive, Director/CEO

MESSAGE FROM MARY LOCKHART WHITE

For 60 years, the nation's Community Action Network has inspired a spirit of hope, helped millions of people each year change their lives, and improved communities all across America.

Community Action strategies and solutions have evolved as the needs of individuals and communities changed.

In 2023, Community Action Partnership of Lake County provided \$7.5 million dollars in Direct Client Assistance. We served 28,087 households and 41,345 individuals.

This Impact Report details the societal and environmental contributions that Community Action Partnership of Lake County has provided to Lake County communities,



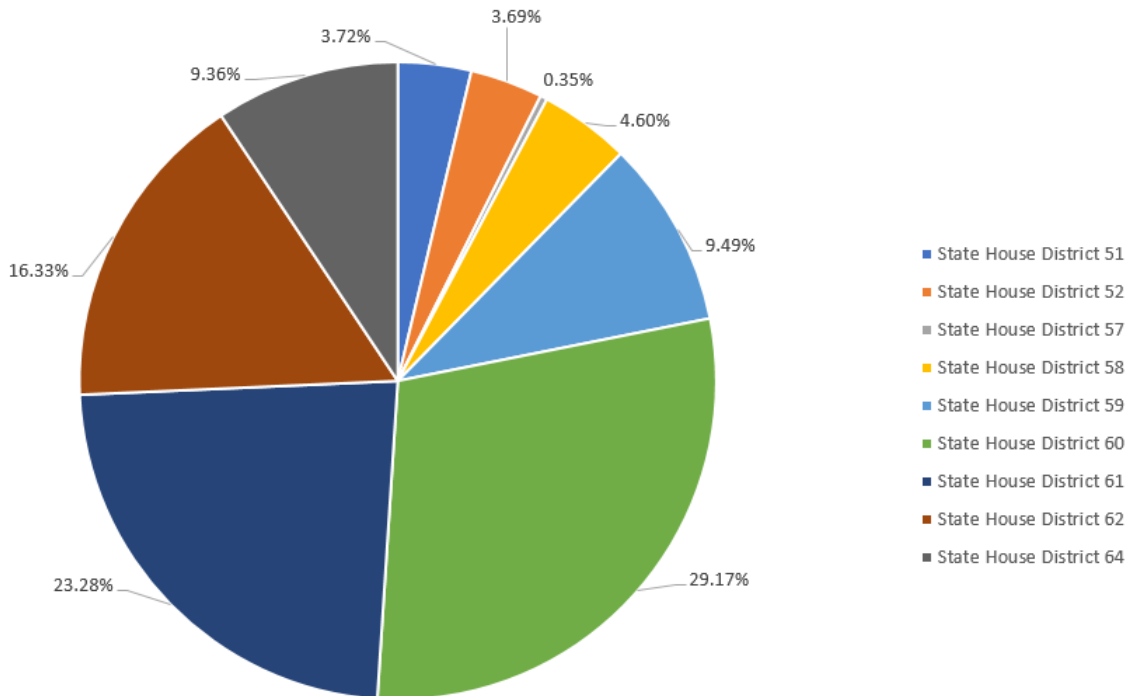
The Promise of Community Action

*Community Action changes people's lives,
embodies the spirit of hope, improves communities,
and makes America a better place to live. We care
about the entire community, and we
are dedicated to helping people help
themselves and each other.*

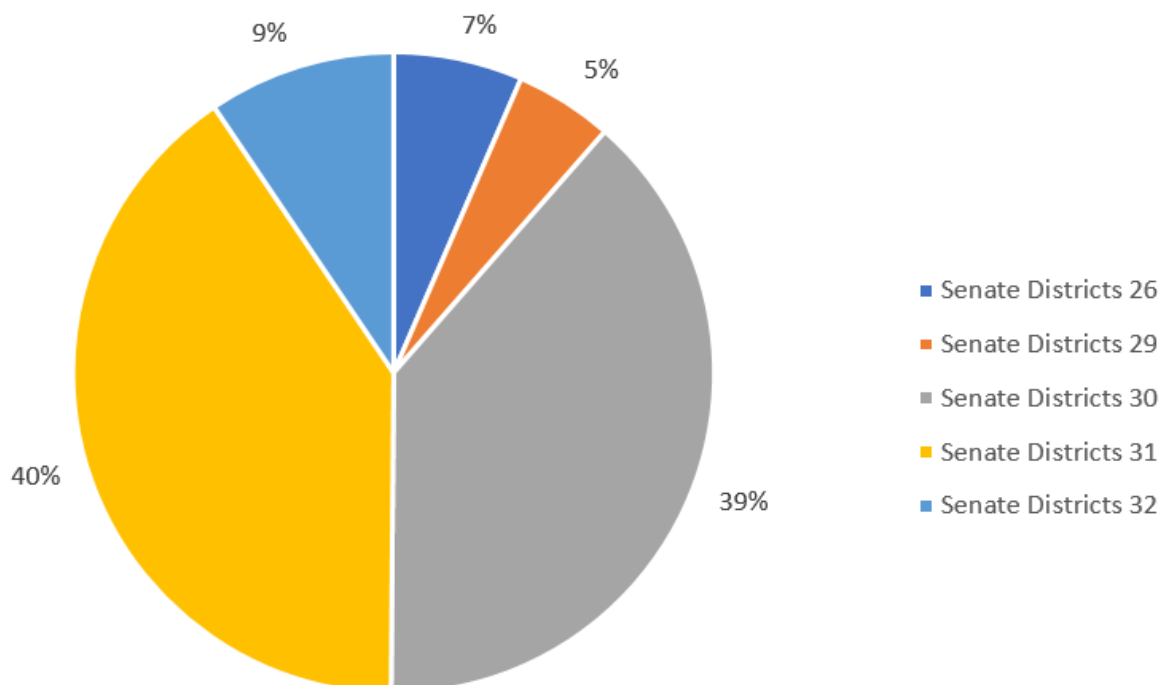


CLIENT ASSISTANCE by DISTRICT

CLIENT ASSISTANCE PERCENTAGE BY IL GENERAL ASSEMBLY DISTRICT



CLIENT ASSISTANCE BY PERCENTAGE SENATE DISTRICT



YOUTH & FAMILY SERVICES

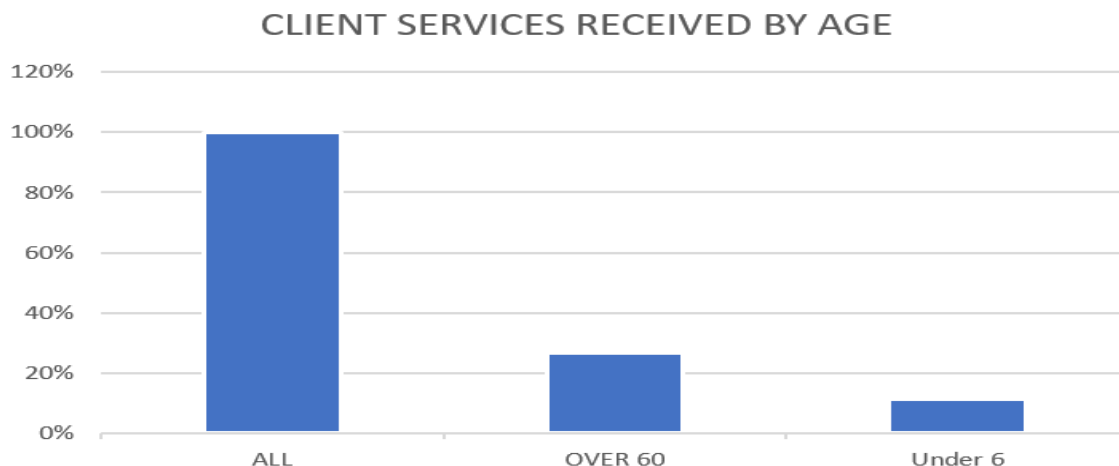
Program	Service	Household	Individual	Client Assistance
CSBG	School Supplies Giveaway	200	650	\$15,348.00
CSBG	Scholarship	4	22	\$6,000.00
CSBG	Rental Assistance	122	312	\$178,791.89
CSBG	Mortgage Assistance	6	12	\$16,371.84
CSBG	Emergency Shelter	32	76	\$10,018.97
CSBG	Utility Payments	108	340	\$29,589.89
CSBG	Health Services	3	3	\$1,500.00
CSBG	Food Pantry	8296	18251	\$106,846.44
CSBG	Holiday Basket	300	676	\$68,974.91
CSBG	Prepared Meals	9505	9505	\$30,268.91
Total		18576	29847	\$463,710.85

Funded by Community Services Block Grant (CSBG). The CSBG program is designed to provide a range of services which assist low-income people to attain skills, knowledge and motivation necessary to achieve self-sufficiency. The program also may provide low-income people immediate life necessities such as food, shelter, medicine, etc. The Illinois Department of Commerce administers the CSBG program .

ENERGY SERVICES

Program	Service	Household	Individual	Client Assistance
LIHEAP	Gas & Electric	7668	16340	\$5,649,321.00
LIHEAP	Furnace	16	43	\$61,923.68
Total		7684	16383	\$5,711,244.68

CLIENT SERVICES BY AGE



FOOD SECURITY SERVICES

FOOD PANTRY IS A MONDAY-FRIDAY FREE FOOD RESOURCE FOR ELIGIBLE LAKE COUNTY RESIDENTS.

Food has been pre-packed. Additional meat and perishable items are added once the recipient arrives according to family size .

Number Who Received Goods at the main Food Pantry and ar Pop-ups: 18,251 Individuals.

Funding provided by Community Services Block Grant (CSBG).

AGENCY RECEIVED RETAIL CAPACITY GRANT FROM NORTHERN IL FOOD BANK.

Community Action Partnership of Lake County was awarded a grant of \$65,615.00 to acquire a refrigerated truck and expand staff.

The refrigerated truck expanded the food pantry's ability to receive 382,161 pounds of fresh produce and store donations, therefore reducing food waste.

Every December, Community Action Partnership of Lake County hosts a Holiday Gift-Basket Give-away for 300 Families.



HOT MEALS FOR SENIORS

In 2023, Community Action Partnership of Lake County cooked and delivered 9,505 hot meals.

According to the Northern Illinois Food Bank, food insecurity affects nearly 1 in 10 Lake County residents.

Food insecurity disproportionately affects Black Lake County residents (1 in 6) and Hispanic Lake County residents (1 in 7).

Delivered Hot Meals for Low-Income Seniors reduces barriers to healthy eating by providing one hot meal per weekday that includes nutritious food choices and delivery.

Lunch is delivered to a designated area within the building between 11:00 am – 1:00 pm. The program staff includes professional cooks, kitchen aids and volunteers. Hot Meals was partially funded by CSBG.

Special Thank you,

North Shore Gas Community Fund

Nicor Gas, Charitable Giving

HOUSING SECURITY

Program	Service	Household	Individual	Client Assistance
CSBG	Rental Assistance	122	312	\$178,791.89
CSBG	Mortgage Assistance	6	12	\$16,371.84
CSBG	Emergency Shelter	32	76	\$10,018.97
LCRA	Rental Assistance	141	355	\$604,726.00
Total		301	755	\$809,908.70

Housing Security is essential for individuals and families to feel safe, secure, and at ease. It involves being able to afford rent and utilities, living in a stable and comfortable home, and residing in an environment that is both safe and healthy. We understand that these basic needs are crucial for one's well-being, and we want to ensure that everyone has access to a place they can call home without having to worry about their safety or stability.



Community Action Partnership of Lake County owns and operates 52 affordable housing units in Antioch, North Chicago and Round Lake Beach. Shown above: Hervey Village in North Chicago.

Corporate Volunteering. A Win-Win

Corporate partnerships have increased Community Action Partnership of Lake County's capacity to serve low-resourced individuals and families on their path to self-sufficiency. These partnerships may be in-kind, monetary donations to specific programs, event sponsorships, grants and/or volunteer days.

Regardless of the *type* of contribution, each can be measured in real *value* to the organization. We can measure the value to the bottom line and for the lives of the families we serve.



Veteran family receives keys from Dereck Leggitt, Manager Customer Service, North Shore Gas.

COMMUNITY ENGAGEMENT

POVERTY SIMULATION

Community Action Partnership of Lake County and the Alliance for Human Services co-sponsored a Poverty Simulation during Community Action Month.

This 90-minute simulation required participants to provide necessities and shelter for themselves and others, with the goal of understanding the difficult decisions faced by many Lake County low-income families.

This was NOT a game.

The statistics and situations we used were real and based on real life experiences of families with low incomes.

Responsibilities for this simulation mimic the choices and responsibilities people living in poverty face every day. They needed to:

- ⇒ Pay Bills (mortgage or rent, utilities, car payment etc.
- ⇒ Feed their family.
- ⇒ Go to work and school.
- ⇒ Decide how to spend their time.
- ⇒ Prioritize Their needs.

Life isn't easy, and similarly, parts of this simulation were not easy either!



COMMUNITY ACTION MONTH ANNUAL ANTI-POVERTY WALK



STAND DOWN FOR MILITARY VETERANS



Community Action Partnership of Lake County hosted a Stand Down For Homelessness and Veterans in risk of homelessness. This event had free resources for Veterans and their families who lack a fixed, regular and adequate nighttime residence

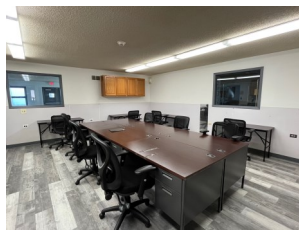


Community Action Partnership of Lake County Opens a Community Resource Center in North Chicago, IL

Culinary Arts Learning Center Prep Kitchen with Warmers and Refrigeration
Event Planning Professionals Complimentary Wi-Fi Room Rentals

The Sherman Avenue Community Resource Center

The Center supports health and well-being of all who live, work, and play in Lake County. Classroom style Training Rooms are available for long-term and short-term rentals. Capacity 14-16 participants each.



Training Rooms



Prep Spaces and Kitchen



Resource Center All Purpose Room

SHERMAN AVENUE RESOURCE COMMUNITY
CENTER FUNDED IN PART BY:



Career Development

In 2023, Community Action Partnership of Lake County relocated its career development programs in Culinary Arts & Hospitality; and Grassroots Solar Education to Sherman Avenue Community Resource Center.

CAREER DEVELOPMENT PROGRAMS ARE FUNDED
IN PART BY:

Career Pathways in Culinary Arts & Hospitality



and

Workforce Development in Culinary Arts





SOCIAL ENTERPRISES

SOCIAL ENTERPRISES provide valuable training opportunities and supportive jobs for those who have been excluded from the traditional labor market. Additionally, profits generated through social enterprises help reduce the agency's dependence on government funding.

CAP CATERING SERVICES

Our professional and devoted staff are experts at organizing & executing any and all types of events. CAP Catering Services provides delicious food and courteous service at affordable prices.



CAP *Changing Lives* Upscale Resale Shop

Changing Lives" Upscale Resale Shop.

The resale shop is now on-line or by appointment. In person pop-up shoppers are invited to a CAP storage facility on event dates. Bring your own truck and friends!



Illinois Solar for All

To Learn More

About Illinois Solar for All in Lake County

CALL: 847.249-4330 x3315

Program Basics

What is Illinois Solar for All?

Illinois Solar for All (ILSFA) is a state program that brings the benefits of solar energy to income-eligible households, nonprofit organizations, and public facilities. Eligible participants can receive affordable solar installations and save money on electric bills.

The State of Illinois offers this program to meet its renewable energy goals and to bring the expansion of solar energy to income-eligible and environmental justice communities. The program reduces the impact of climate change in communities across the state.

How can I participate in Illinois Solar for All?

ILSFA consists of sub-programs aimed at different types of participants and projects. Each sub-program has different eligibility requirements.

Residential Solar

The Illinois Solar for All: Residential Solar sub-program offers affordable solar installations for owners of single-family and multifamily buildings with income-eligible households.

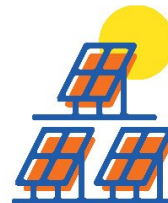


Who can participate?

- **Single-family residential properties:**
Occupied by households with an income of 80% or less of Area Median Income (AMI)
- **Multifamily residential, two- to four-unit properties:**
At least two units occupied by households with incomes of 80% or less of AMI
- **Multifamily residential, five-unit or larger properties:**
At least half of units occupied by households with incomes of 80% or less of AMI

Community Solar

Illinois Solar for All: Community Solar allows members of a community to subscribe to a single solar project. A solar project is installed at a site served by a local electrical utility. Anyone with an electricity account with that utility can subscribe to shares of that project. Subscribers of the solar project will receive credits on their electric bill.



Who can participate?

- **Income-eligible households:** Households with an income that is 80% or less of the AMI.
- **Non-profit and public facilities:**
A single eligible non-profit or public facility can serve as the anchor subscriber and receive the same level of savings as income-eligible households.

Community members have a voice in the development of ILSFA community solar projects. Solar companies must engage the local community on project locations and how subscribers can participate. This helps to ensure that communities see greater benefits and play an important role in the development process.

Non-Profits and Public Facilities

This program provides incentives for properties occupied by non-profit organizations and public facilities that serve income-eligible or environmental justice communities. Projects must be onsite solar projects that provide energy benefits directly to the organization or public facility.



Who can participate?

- The property is occupied by a non-profit organization or is owned and occupied by a public facility.
- The property is within either a qualified ILSFA environmental justice community or income-eligible community.
- The property is occupied by a Critical Service Provider (CSP). For a public facility, the building must host a department or agency that is a CSP.
- The non-profit or public entity must be able to demonstrate community engagement.